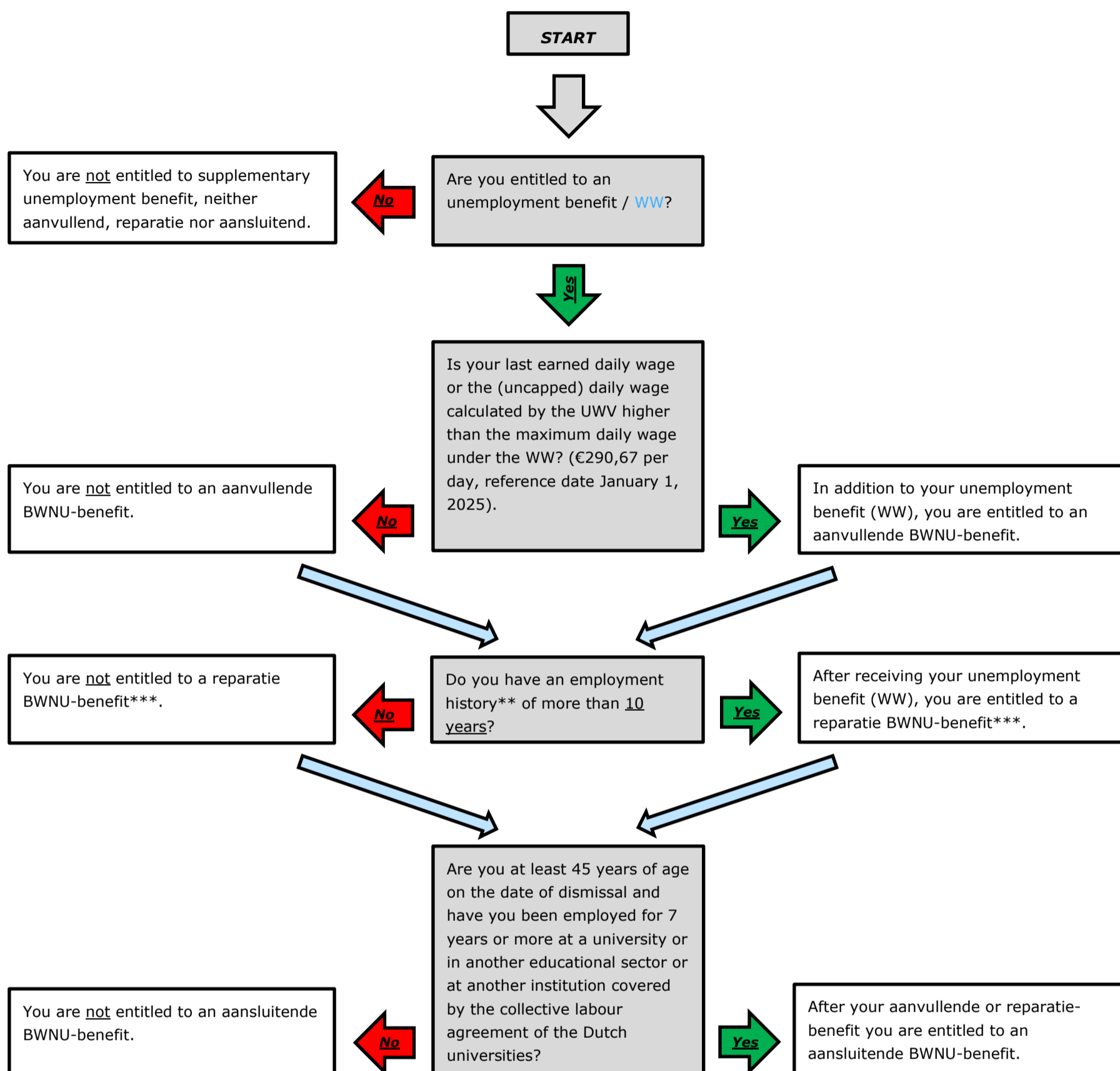


Flow chart (version 2025-01)

determination of entitlement to a supplementary unemployment benefit under the

Bovenwettelijke Werkloosheidsregeling Nederlandse Universiteiten (BWNU 2020*)

<https://www.vsnu.nl/bwnu.html>



*Go to BWNU 2020.

**The employment history consists of a 'fictional' and 'factual' employment history.

- The fictional employment history includes all years from the year you turned 18 up to and including the year 1997

- The factual employment history includes all years from January 1, 2013 up to and including the year prior to the year in which you became unemployed and in which you worked at least 208 hours + all years from 1998 to 2012 in which you worked at least 52 days according to the UWV statement.

***The reparatie-benefit concerns the repair of the shortened unemployment benefit / WW (3rd WW-year) as included in the WW as of January 1, 2016.

This scheme does not apply if you became unemployed before Januari 1, 2014, or if your employment contract was terminated due to reorganization for which the restructuring plan was established before January 1, 2014.

If you wish to claim a BWNU benefit, you must submit the application online to Visma Idella within 7 days of the start of your unemployment. To do so, go to the website <https://mijnuitkering.visma-idella.nl/login> and first click on register. You will then receive login credentials from Visma Idella which you can use to log in to the same website and submit an application.

For more information, please contact your HR-department or Visma Idella (088-404 4601 for employees, 088-404 4602 for employers).

No rights can be derived from this chart.